

Hose Parts and Clamps

UTILITY HANGERS

These popular hangers are used as pole hangers, hose hangers and for a variety of other applications. Constructed from heavy duty plastic, these hangers are strong and durable. They are easy to install and come complete with wood screws. Attractively packaged in pairs.



No. 954 - One Loop



No. 955 - Two Loop



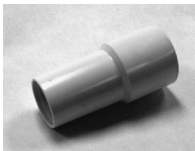
No. 956 - Three Loop



No. 957 - Two Loop

Hose Cuff

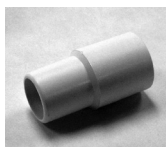
The Hose Cuff is used as a replacement for hose ends.



No. 211 - 1 1/2" Threaded Cuff



No. 231 - 2" Threaded Cuff



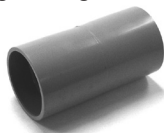
No. 241 - 1 1/4" Threaded Cuff

Hose Mender

The Hose Mender is used to repair a damaged hose or to join two hose pieces for a longer length.



No. 212 - 1 1/2" Threaded Mender



No. 232 - 2" Threaded Mender



No. 242 - 1 1/4" Threaded Mender



STAINLESS STEEL CLAMPS

A complete line of superior quality, worm-drive gear clamps. Constructed entirely from marine grade stainless steel to meet the stringent requirements most often specified by the OEM marketplace. The unique 'Interlock' design strengthens under tension to allow maximum torque during application for a safe, secure seal. Our hose clamps are constructed without spot welds to avoid corrosion in harsh environments. Ideal for applications where stainless steel is required to withstand corrosive elements other than underground use.

BAND: Full 9/16" wide - 300 marine grade stainless steel
SCREW: Shouldered 5/16" (8mm) hex head - SAE standards - 300 marine grade stainless steel.

Part No.	Size	Pack
269-4	7/32" - 5/8"	10 pcs./Box
270-6	3/8" - 7/8"	10 pcs./Box
271-8	7/16" - 1"	10 pcs./Box
272-12	9/16" - 1 1/4"	10 pcs./Box
273-16	11/16" - 1 1/2"	10 pcs./Box
274-20	3/4" - 1 3/4"	10 pcs./Box
275-24	1 1/16" - 2"	10 pcs./Box
276-28	1 5/16" - 2 1/4"	10 pcs./Box
277-32	1 9/16" - 2 1/2"	10 pcs./Box
278-36	1 13/16" - 2 3/4"	10 pcs./Box
279-40	2 1/16" - 3"	10 pcs./Box